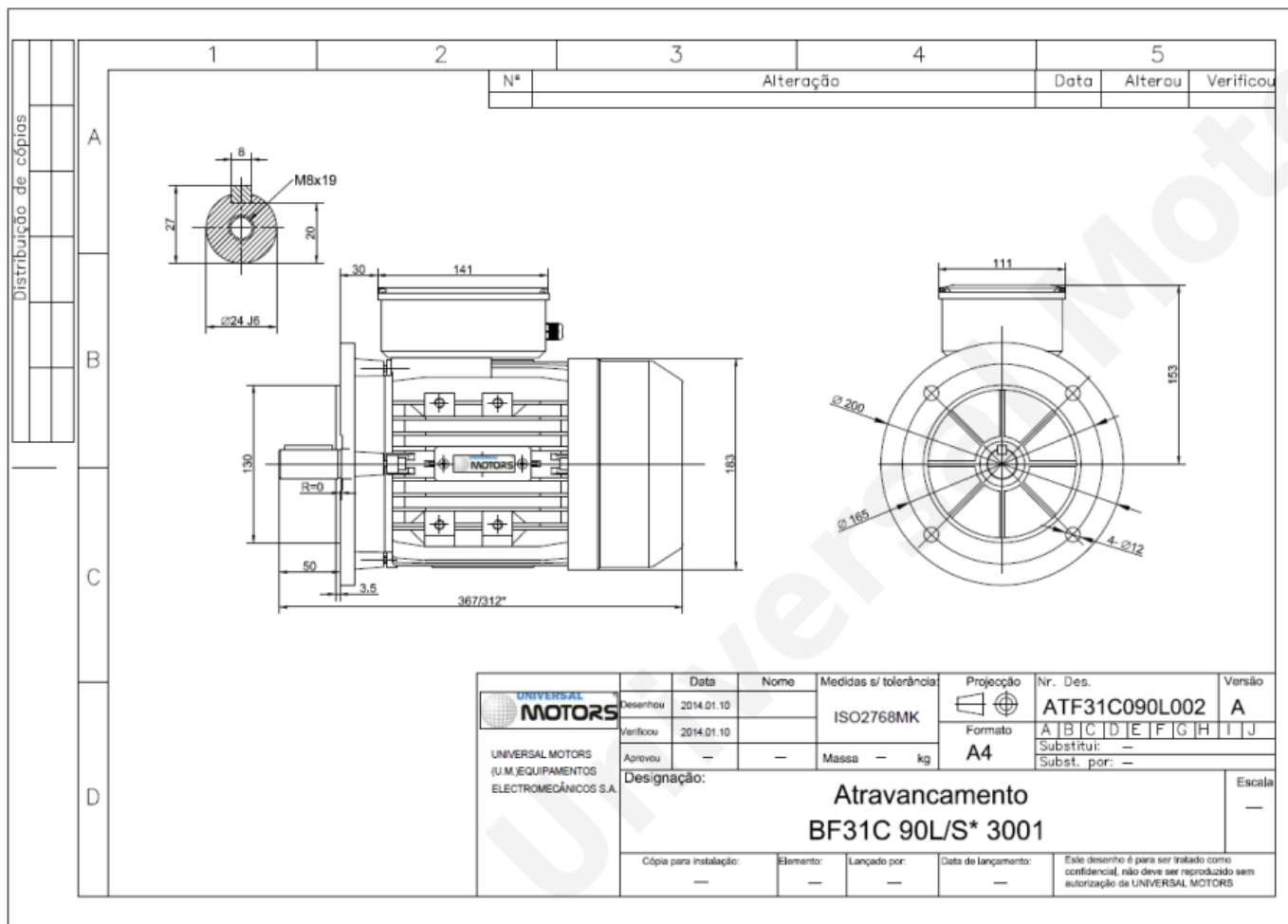




TECHNICAL DATA

Single Phase Motors - Permanent Capacitor
 UPC 90L-4
 1.5 kW / 2 Cv
 1400 RPM



Motor type: **UPC 90L-4**
 Output: **1.5 kW / 2 Cv**
 Speed (min⁻¹): **1400 RPM**
 Voltage: **230 V**
 Frequency: **50 Hz**
 Current: **9.40 A**
 Power factor (Cos Ø): **0.95**
 Poles: **4**
 Insulation class: **F**
 Temperature rise Class: **B**
 Efficiency 100%: **73.0 %**
 Torque: **10.54 N.m**
 Tstarting/Tnominal: **0.30**
 Istarting/Inominal: **4.8**
 Tmaximum/Tnominal: **1.7**
 Weight: **16.0 Kg**
 Bearing DE: **6205 2Z C3**
 Bearing NDE: **6204 2Z C3**

Beatson Fans & Motors Ltd
 0114 2449955
www.beatson.co.uk
sales@beatson.co.uk