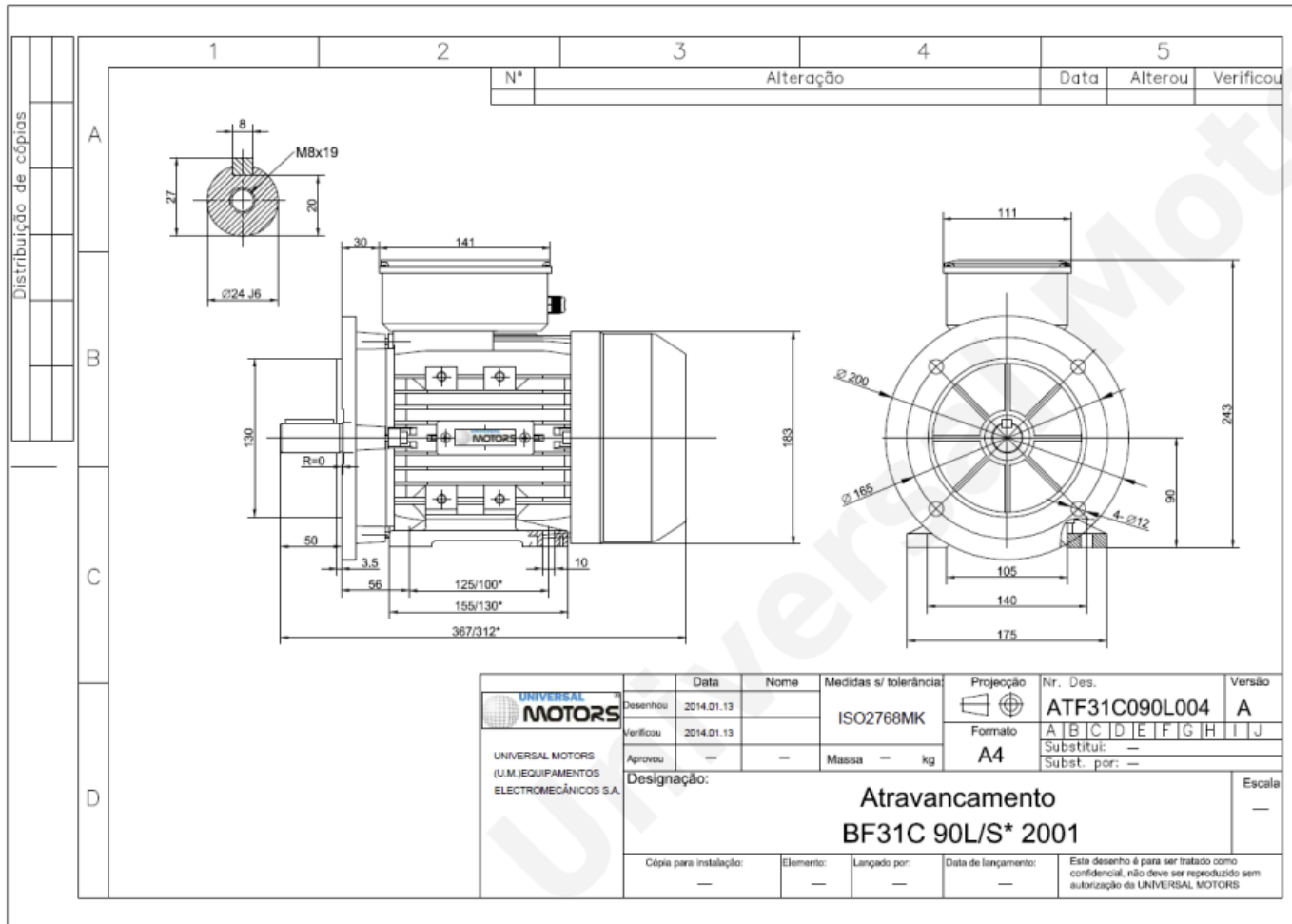




# TECHNICAL DATA

Single Phase Motors - Permanent Capacitor  
 UPC 90L-4  
 1.5 kW / 2 Cv  
 1400 RPM



Motor type: **UPC 90L-4**  
 Output: **1.5 kW / 2 CV**  
 Speed (min<sup>-1</sup>): **1400 RPM**  
 Voltage: **230 V**  
 Frequency: **50 Hz**  
 Current: **9.40 A**  
 Power factor (Cos Ø): **0.95**  
 Poles: **4**  
 Insulation class: **F**  
 Temperature rise Class: **B**  
 Efficiency 100%: **73.0 %**  
 Torque: **10.54 N.m**  
 Tstarting/Tnominal: **0.30**  
 Istarting/Inominal: **4.8**  
 Tmaximum/Tnominal: **1.7**  
 Weight: **16.0 Kg**  
 Bearing DE: **6205 2Z C3**  
 Bearing NDE: **6204 2Z C3**

Beatson Fans & Motors Ltd  
 0114 2449955  
[www.beatson.co.uk](http://www.beatson.co.uk)  
[sales@beatson.co.uk](mailto:sales@beatson.co.uk)