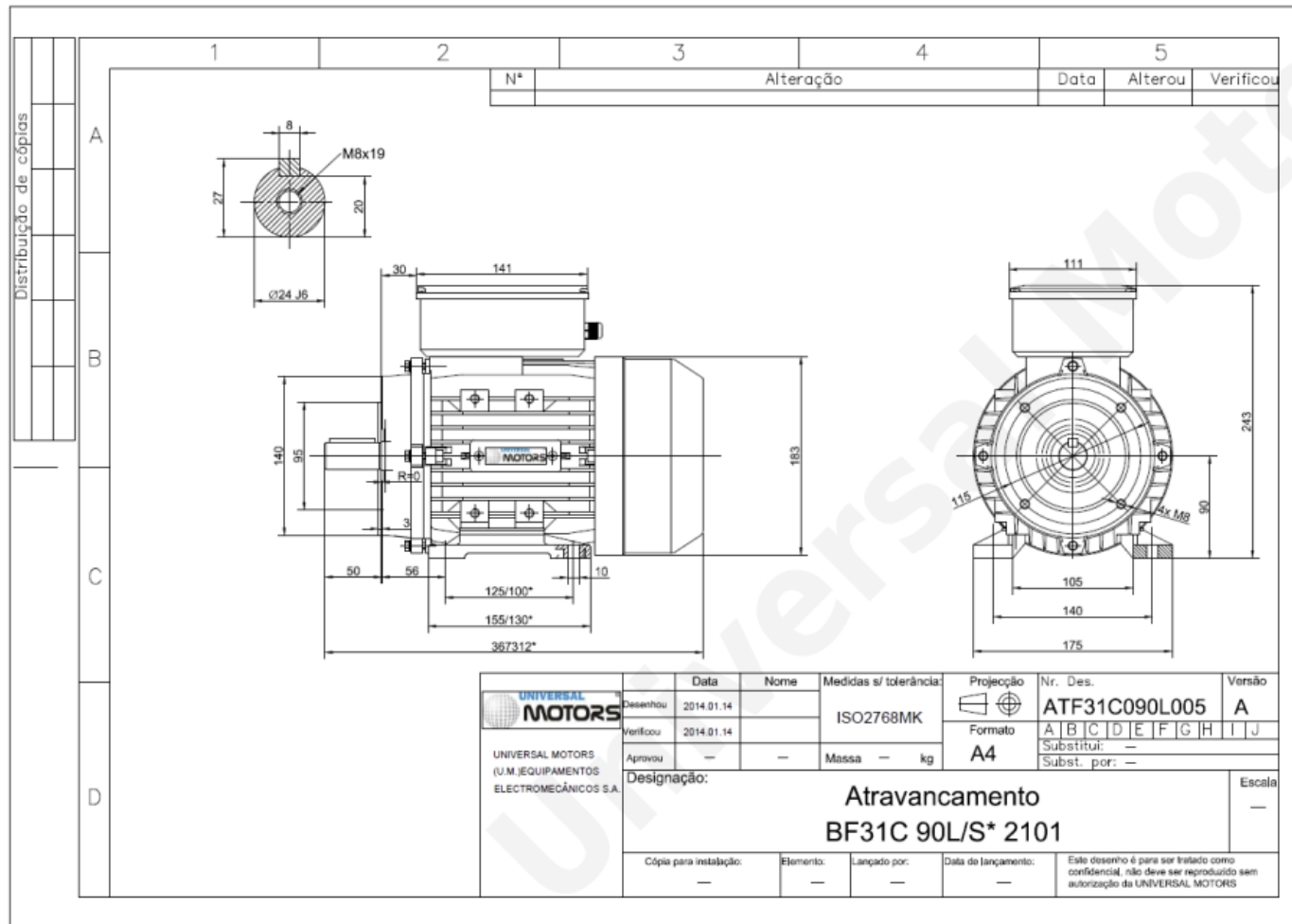




TECHNICAL DATA

Single Phase Motors - Permanent Capacitor
 UPC 90L-4
 1.5 kW / 2 Cv
 1400 RPM



Motor type:	UPC 90L-4
Output:	1.5 kW / 2 Cv
Speed (min ⁻¹):	1400 RPM
Voltage:	230 V
Frequency:	50 Hz
Current:	9.40 A
Power factor (Cos Ø):	0.95
Poles:	4
Insulation class:	F
Temperature rise Class:	B
Efficiency 100%:	73.0 %
Torque:	10.54 N.m
Tstarting/Tnominal:	0.30
Istarting/Inominal:	4.8
Tmaximum/Tnominal:	1.7
Weight:	16.0 Kg
Bearing DE:	6205 2Z C3
Bearing NDE:	6204 2Z C3

Beatson Fans & Motors Ltd
 0114 2449955
www.beatson.co.uk
sales@beatson.co.uk